



# CaptureVue™

for Microsoft SharePoint

## KEY FEATURES

**CaptureVue integrates with**  
Microsoft SharePoint 2010  
Microsoft SharePoint 2007

### Integrations also available for

- SAP
- Open Text Content Server  
(formerly *Livelink Enterprise Server*)
- Open Text eDOCS DM
- EMC Documentum
- ENOVIA MatrixOne
- Oracle Universal Content Management (UCM)
- Oracle Agile PLM

### View, Mark-up and Collaborate on CAD files originated in

- AutoCAD
- MicroStation
- Autodesk Inventor
- SolidWorks
- Solid Edge
- CATIA
- Pro/ENGINEER
- ...and many more

### Over 450 file formats supported including

- PDF
- Microsoft Office
- All major graphics formats, inc. TIFF
- Legacy formats, inc. WordPerfect and 1-2-3

**OPENTEXT**  
THE CONTENT EXPERTS

**Microsoft**®

**ORACLE**®

CaptureVue from Cad-Capture combines the market leading enterprise visualisation solution, AutoVue from Oracle, with the strength and depth of Microsoft SharePoint. Providing the ability to get true value from your engineering models, drawings and data, CaptureVue is unparalleled in its versatility and range of features in the ECM market today.

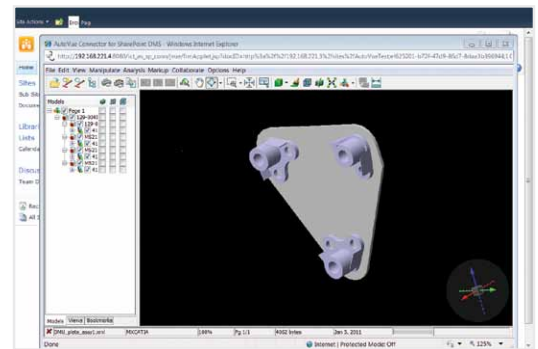
Deployed globally across multiple industry sectors, CaptureVue delivers the ability to create, control and distribute general office documents and complex engineering data in a fast, efficient and secure manner, delivering the benefits of SharePoint to the engineering community.

## Microsoft SharePoint

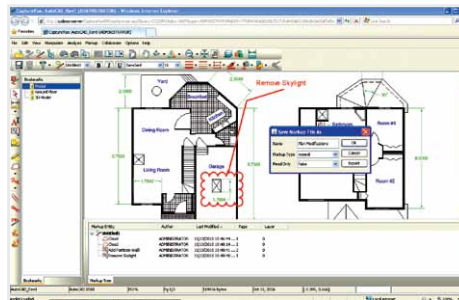
CaptureVue integrates with Microsoft SharePoint ensuring controlled access to documents and enabling mark-up creation, printing and real-time collaboration directly from the SharePoint interface.

## Multi format viewing

CaptureVue supports the vast majority of major 3D, 2D and office formats – over 450 different file types can be viewed without the need for the originating applications, including 3D formats from AutoCAD, MicroStation, SolidWorks and Solid Edge.



CaptureVue 3D Model - Exploded View

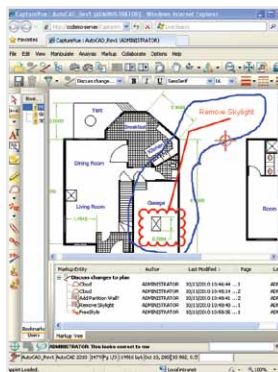


CaptureVue - Saving a Mark-up

## Mark-up and redline capabilities

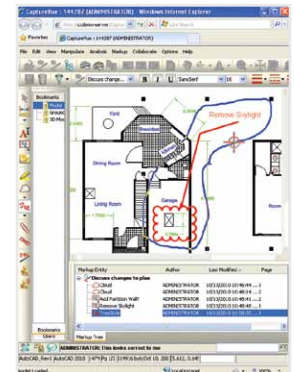
Easily mark-up documents with a variety of entities such as clouds, notes, text, measurements and symbols, and save into SharePoint.

As part of a design review, multiple mark-ups can be opened and consolidated, and a sign-off stamp used to ensure security and compliance. Mark-ups from previous document versions may be loaded to ensure all necessary revision changes have been made.



## Real time collaboration

Multiple users can review, comment on and discuss documents together in real-time, with the resultant mark-up being stored in SharePoint, containing the list of collaborators. This helps speed up the design review process, enabling faster decision making and reducing the need for travel, saving time and money.





## Languages

English  
French  
German  
Dutch (additional charge)  
Japanese  
Korean  
Traditional Chinese  
Simplified Chinese

## Integrated multi-format viewing and collaboration across sectors including

Oil & Gas  
Architectural  
Engineering  
Construction  
Utilities  
Local Government  
Power Generation  
Manufacturing  
...and more

## Cad-Capture's portfolio includes

CaptureVue Connector  
CaptureLink for AutoCAD  
CaptureLink for MicroStation  
CaptureTransmit  
CaptureTag  
CaptureNet  
Bulk Migration and Upload Tools

## For more information:

### CAD-CAPTURE

t: +44 (0) 1254 504400

e: [software@cadcap.co.uk](mailto:software@cadcap.co.uk)

w: [www.cadcap.com](http://www.cadcap.com)

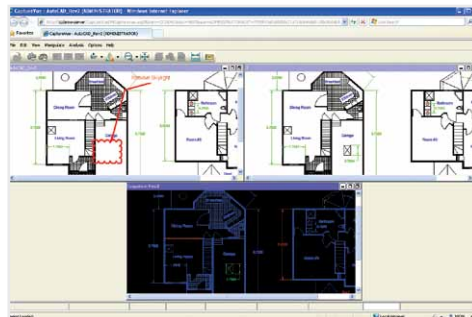


**CAD-CAPTURE**



## Printing and watermarks

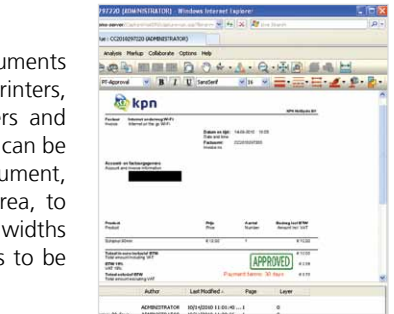
Powerful printing capabilities enable users to print documents either singly or in batches to both large and small format printers, adding watermarks, stamps, headers and footers. Headers and footers may include attribute data from the document, and can be controlled centrally. Mark-ups can be printed with the document, which can be printed in its entirety or only a specified area, to scale or to fit. CaptureVue matches pen colours and line widths to the CAD authoring application, enabling identical prints to be produced.



CaptureVue - Version Comparison

## Web based viewing

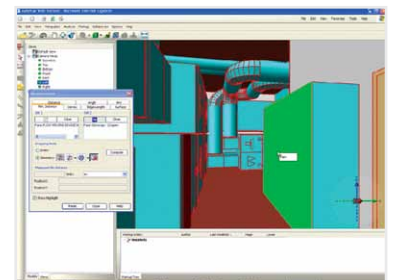
As a true thin client with a light footprint, CaptureVue provides the ability to access and work on files without the need for expensive CAD tools. Rotation, measurement, explosion and 3D walkthroughs are all available within a standard web browser, from anywhere where access is permitted.



CaptureVue - Invoice Approval

## Beyond comparison

Instantly identify the differences between versions of a drawing with the in-built compare changes feature - highlight omissions, additions and unchanged information in both 3D models, 2D drawings and PDFs. Identify components in 3D models and dynamically highlight all other occurrences of that component in the model.



CaptureVue - 3D Walkthrough

## A complete solution

CaptureVue solutions integrate with Organice and Bentley Projectwise, allowing AutoCAD and MicroStation models and drawings (including Xrefs and inserted rasters) to be created in, controlled by and distributed within SharePoint environments and beyond.

This means you can manage all your office documents, engineering drawings and legacy files within SharePoint, and then distribute them to a wider audience - allowing the right person to view the right version of the right drawing/document... at the right time!

[www.cadcap.com/capturevue](http://www.cadcap.com/capturevue)